

FLEXIBILITY
PRECISION
RELIABILITY
DESIGN

Mechanical components

The precision slide guides are available in two series with identical dimensions as dovetail slides or as roller bearing slides. Application fields are the general machine construction, the construction of special purpose machines and the construction of jigs and fixtures.



SVAN dovetail slides

This guiding system makes it possible to accurately position your products. Furthermore, you can fix it exactly at the desired place. The innovation is due to the backlash-free clamping, horizontal and vertical side misalignment 3 µm.



Motorized precision slides spindle drive

Motorized precision slides with spindle drive, optionally with bellows cover or metal cover. Design and Execution of the guiding allow extreme high loads and guarantee a high system rigidity.



Motorized precision slides integrated linear motor

Motorized precision slides with integrated linear motor, optionally with bellows cover or metal cover. The integrated linear motor provides high speed, acceleration and positioning accuracy, even at high strokes.



Controller

Universal, modular CNC-controllers with integrated PLC offers flexibility and capacity to the machine construction, automation technology, machine tools and special applications.



Drives

We have a wide product range of stepper and servo motors for the drive concerning our motorized precision slides and rotary tables.



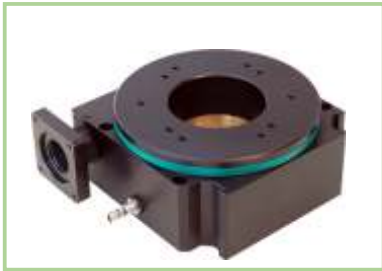


**Solutions for
guiding-,
drive-,
movement-,
control- and
positioning requirements**



Rotary tables with worm gear

The rotary tables with integrated precision roller bearing and worm gear can be operated in all mounting positions. Different limit switches are available.



Rotary tables with direct drive

Directly driven rotary tables with iron-afflicted electronically commutated 3-phase synchronous motor and permanently magnetically excited secondary part ensure highest accuracy, high rigidity and optimal speed-ability.



Rotary-swivel unit RT3A100

The rotary table combination RT3A100 consists of two directly driven rotary tables of the RT3A100 series. The B-axis has a swivelling range from approx. -10° to $+110^\circ$; the C-axis can be rotated infinitely.



Swivel unit for rotary tables

The swivel unit allows a processing of workpieces in individually adjustable angle positions. The clamping surface of the swivel unit is preferably suitable for the attachment of our rotary table series RT2A.



Positioning system posistep 5030

A complete, plug and play 2- or 3-axis CNC positioning system in table design. The machine is very versatile and particularly suitable for light drilling work, assembly technology, stud welding, screwing parts, setting pins, soldering, ultrasonic welding and casting.



Customer specific applications

In addition to individual components, we supply systems ready for installation. These systems can be assembled from different components, manual / motorized axes and / or rotary axes - as desired and depending on the requirements.

**We are looking forward
to your message!**



Individual application solutions

In cooperation with our customers we develop individual solutions for a wide variety of applications.

Our success is based on a comprehensive solution competence with wide industrial know-how and a team of high qualified engineers and developers.

No matter what is clients business, the personal customer support is always at the forefront.

The Föhrenbach company group

The Föhrenbach Group, which was founded by Manfred Föhrenbach in 1975, stands for uncompromising precision and above-average durability of its products.

The company with headquarters in Löffingen-Unadingen and facilities in Switzerland and Ireland is one of the leading manufacturers of high-precision components such as manual slide guides, rotary tables and rotation axes and motorized precision slides (linear motor axis and spindle drive).

Föhrenbach develops customer-specific complete solutions and special machines, incl. application-optimised CNC control units, which are suitable for these high-precision system components.



Föhrenbach GmbH

Lindenstraße 34
D- 79843 Löffingen-Unadingen
Tel.: +49 (0) 7707-159 0
Fax: +49 (0) 7707-159 80
E-Mail: info@foehrenbach.com
www.foehrenbach.com



Föhrenbach AG

Tannenwiesenstraße 3
CH- 8570 Weinfelden
Tel.: +41 (0) 71 626 26 76
Fax: +41 (0) 71 626 26 77
E-Mail: info.ch@foehrenbach.com
www.foehrenbach.com